

# 成先啟後 能成其大

Inheriting the past and ushering in the future could lead to one's success.



1931

國立成功大學

National Cheng Kung University

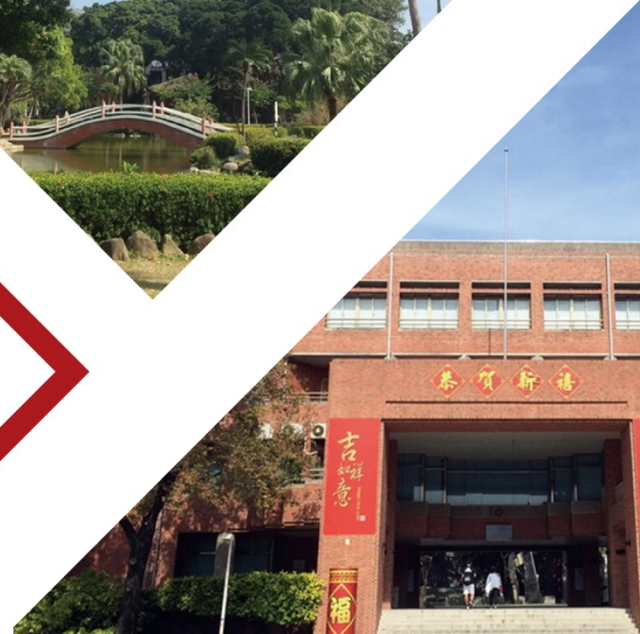


國立成功大學  
National Cheng Kung University

# Outline

Achievement  
Research

Chronicle  
Industry



# Ranking and Performance



— 2019 QS World Ranking —

234



— 2019 Industry Income —

2%



— 2018 Social Prestige —

2



— 2017 CEO of NCKU —

48

2018/10/15  
UPDATED

# Subject Ranking



—Engineering—

75

—Computer Science—

83

—Art & Design—  
—Mineral and Mining—

48

—Civil and Structural—  
—Electrical and Electronic—  
—Mechanical—

75

—Engineering and Technology—

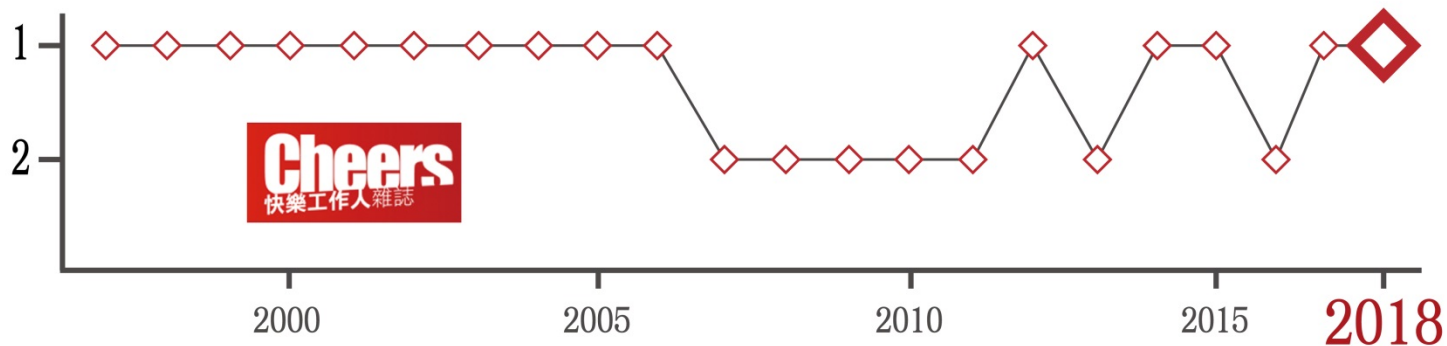
62

2018/10/15  
UPDATED

# Enterprises Favorite College Students

Acquired for 20 years,  
and won 4 times in the past 5 years.

- Interpersonal communication and teamwork.
- The ability to solve problems.
- Performance exceeds expectations.







南  
台  
古  
都

# Tainan

The oldest city in Taiwan, which is well woven into the fabric of rich culture and interesting anecdotes.

# NCKU LOCATION

Yunlin Douliu Campus  
(*hospital Douliou Branch*)

Annan Campus

Tainan Technology  
Industrial Park

Southern Taiwan Science Park  
-Tainan Science Park

Gueiren Campus

Tainan Main Campus  
(including the hospital)

Southern Taiwan Science Park  
-Kaohsiung Science Park



# NCKU CHRONICLE

—Tainan Technical College—



1931





1946

Taiwan Provincial Tainan  
Junior College of Technology



1956

Provincial Cheng Kung University



1971

National Cheng Kung University



2011

Taiwan Top University



2018

Global Taiwan

—9 Colleges, 43 Departments, 39 Institutes—

# NCKU People

=NCKU=



6,003



Bachelor	11,507
Master	8,106
Ph. D	1,780



140,000+

---

=NCKU hospital=



743



2,611



1,352

# 2018 Dual Degree Partner

---



## -North America-

Case Western Reserve University  
Temple University  
University of Illinois at Urbana-Champaign  
University of North Texas  
Texas Tech University  
University at Buffalo, SUNY  
Polytechnic Institute of New York  
University  
Southern Illinois University at Carbondale  
University of Houston  
The University of Texas at San Antonio  
The University of Florida



# 2018 Dual Degree Partner

---

## -Europe-

University of Sheffield  
University of Manchester  
University of Leeds  
University of Lancaster



University of Milan



ESC Rennes School of Business  
Ecole de Management de Normandie  
IPSA



Brandenburg University of  
Technology Cottbus



# 2018 Dual Degree Partner

---



University of Queensland

## -Northeast Asia-



Tsinghua University  
Xi'an Jiaotong University



Niigata University  
Hokkaido University



Jeju National University

## -Southeast Asia-



Mahidol University



Institute Sinaran  
Southern College  
New Era College  
Han Chiang College  
Malaya University



University of Brawijaya  
Institut Teknologi Sepuluh Nopember



# International Degree-seeking Students

---



Country: 66  
Student: 876  
Updated: 2018/10/15

## -Asia-

Indonesia	195	Iran	7
Vietnam	179	Bangladesh	5
Malaysia	113	Myanmar	2
India	54	Nepal	2
Thailand	33	Singapore	2
Japan	24	Iraq	1
Philippines	23	Jordan	1
South Korea	23	Kazakhstan	1
Mongolia	17	Sri Lanka	1
Pakistan	10		

# International Degree-seeking Students

---



## -Europe-

France	9	Slovakia	2
Russia	4	Serbia	2
Netherlands	4	Belgium	1
Germany	4	Hungary	1
U.K.	3	Poland	1
Turkey	2	Austria	1
Czech Republic	2	Italy	1

Country: 66

Student: 876

Updated: 2018/10/15

# International Degree-seeking Students

---



Country: 66  
Student: 876  
Updated: 2018/10/15

## -Africa-

Kingdom of Eswatini	8
Burkina Faso	8
Nigeria	3
Kenya	2
South Africa	2
Egypt	1
Ethiopia	1
Gambia	1
Ghana	1
Malawi	1
Zimbabwe	1

# International Degree-seeking Students

---

## -Latina America- -Cabbean-



Country: 66  
Student: 876  
Updated: 2018/10/15

Belize	14
Honduras	12
Nicaragua	10
Haiti	9
Paraguay	8
St. Lucia	6
El Salvador	5
Ecuador	3
Panama	3
Guatemala	3
Colombia	3
St. Vincent and Grenadines	3
Mexico	3
Saint Kitts and Nevis	2
Chile	1

# International Degree-seeking Students

---



Country: 66  
Student: 876  
Updated: 2018/10/15

## -N. America-

America	19
Canada	4

---

## -Oceania-

Kiribati	3
Australia	2
Solomon Islands	2
Marshall Islands	1
Nauru	1



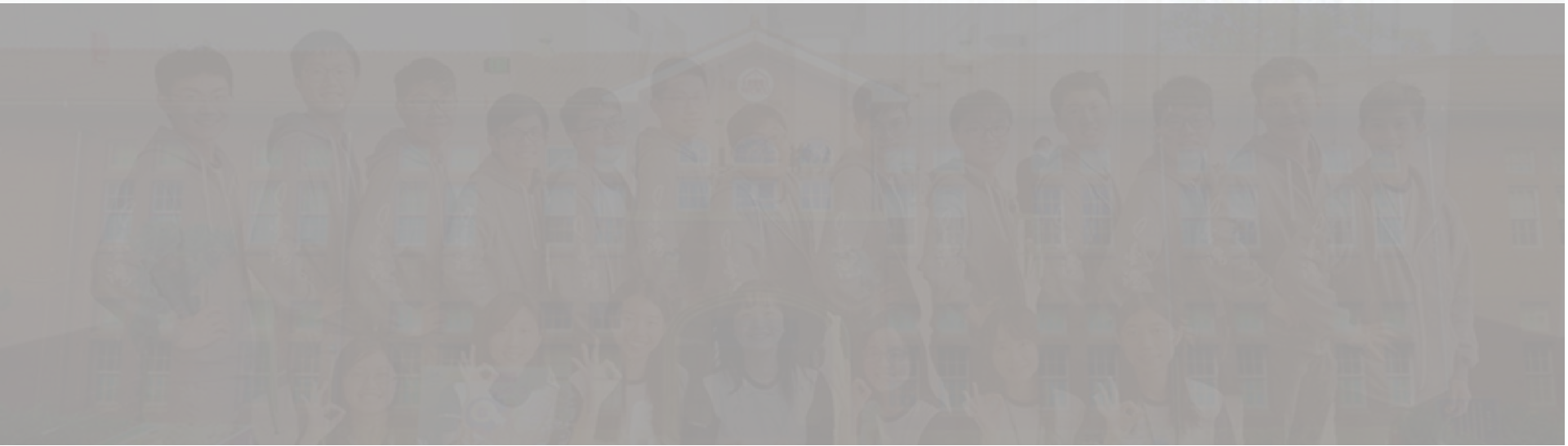
# The leader of SATU International Secretariat

Presidents' Forum of Southeast and  
South Asia and Taiwan Universities  
(SATU)



-Member Universities-



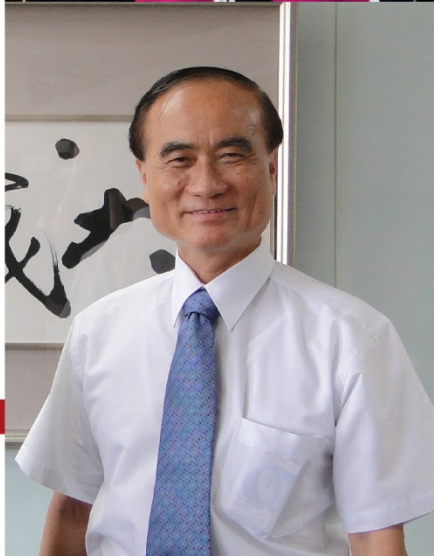


——教學研究成果——

# Achievements

2018

Asian Scientist



Jenny Huey-Jen Su

—Leadership—

X

Michael Ming-Chiao Lai

—Biomedical Sciences—

# GLORIA



Foreign Industrial resources

X

Academic

X

Industry

- promote and support significant research —
- global industrial academic cooperation —



# Oversease Bases



成功大學  
國際產學聯盟

GLORIA ×  
Global Research & Industry Alliance



Global Research & Industry Alliance NCKU

# Achievements

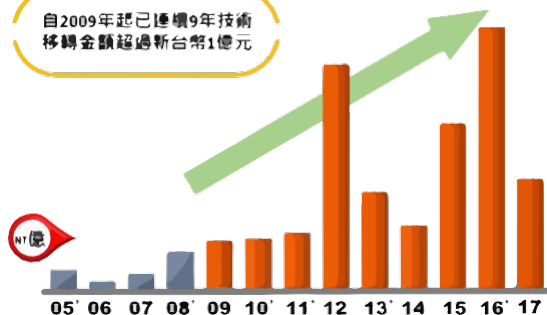


## 多元研發能量 貼近產業需求

過去5年(2012-2016)成大平均研發經費為43.4億新台幣，其中約兩成8.6億新台幣來自產業界。

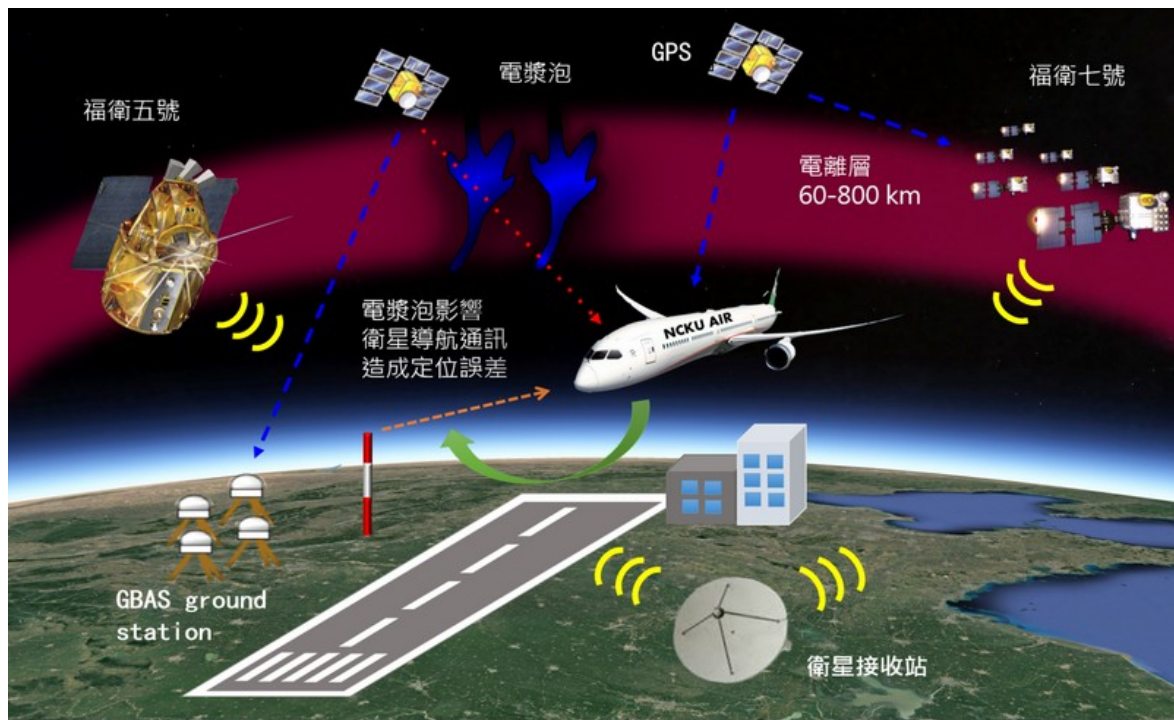


自2009年起已連續9年技術移轉金額超過新台幣1億元



## 高度產業應用 技轉連年破億

成大師生與近200家國內外企業合作執行產學計畫案 自2009年起已連續9年技術移轉全額超過新台幣1億元 乃全台各大學中唯一達到此一里程碑者。



It is a system which can predict space weather in the world. The FS-5 equipped with an advanced ionospheric plasma detector has been successfully launched, and it can provide a large amount of information on the distribution of space ionospheric plasma. Therefore, NCKU will lead in space weather prediction.

## Ionospheric Space Weather Prediction System



NCKU cooperated with Hanxiang Corporation to participate in the international cooperation high-energy physics experiment led by Nobel laureate academician Ding Yizhong and upgraded the space probe AMS-02 radiator. This project was considered by the NASA as the most difficult space maintenance tasks, NCKU and Hanxiang have a common ambitious goal to jointly complete this cross-domain cooperation case.

# The Most Difficult Space Maintenance Mission of NASA

---

# Outstanding Research

---

Science  
AAAS

**Dept. of Life Sciences / Assistant Prof. Chen, I-Ching**

Biodiversity redistribution under climate change: impacts on ecosystems and human well-being



Science  
AAAS

**Dept. of Electrical Engineering / Prof. Wu, Wei-Sheng**

The rules for piRNA targeting reveal resistance of endogenous genes to piRNA silencing in *C. elegans*



nature  
nanotechnology

**Dept. of Physics / Prof. Chen, Tse-Ming**

All-electric all-semiconductor spin field-effect transistor





---

# Outstanding Research

---



---

**Inst. of Basic Medical Sciences / Chair Prof. Hsu, Kuei-Sen**

Oxytocin stimulates hippocampal neurogenesis via oxytocin receptor expressed in CA3 pyramidal neurons



---

**Inst. of Tropical Plant Sciences / Associate Prof. Tsai, Wen-Chieh**

The Apostasia genome and the evolution of orchids







## The Creative Teaching Space

— THINK OUTSIDE THE BOX —





– MULTIPLE FUNCTIONS FOR STUDY, DISCUSSION, AND IDEA-SHARING –

# KnowLEDGE

The “KnowLEDGE” Reading Center, a renewed space for both individual and collaborative learning, is divided into two major areas, group discussion area and individual study area. What makes the space design of the reading center special is that the tables and the chairs here are adjustable based on the number of the students, which provide a more functional and creative environment for students.



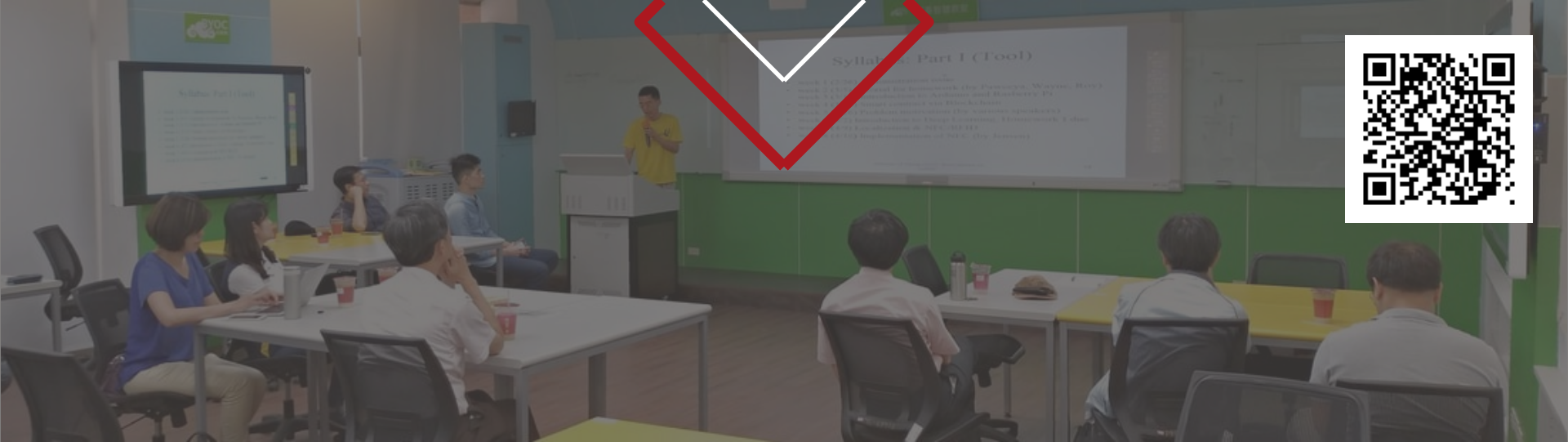


## — THE DISCUSSION SPACE—

# D-24

To encourage interdisciplinary communication, NCKU set up the space D-24 at Student Activity Center II, for NCKU students to have a safer and more comfortable place for discussion.

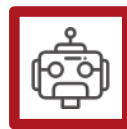




HYD/CSIE/IDE/ECO  
**Water  
Environment**



CSIE/IDE/PSY/ECO  
**Human-Computer  
Interaction**

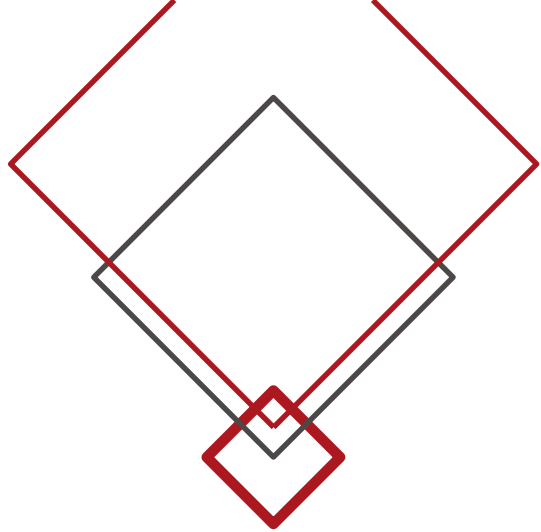


ES/IDE/PSY/ECO/CSIE  
**Robot**

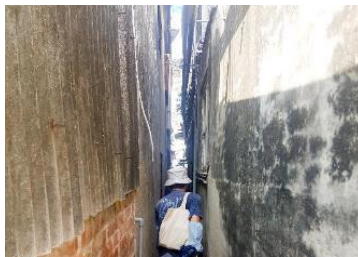


CSIE/NUR/IOG/IDE  
**Elderly Care**





# EXPLORING TAINAN



# 成大USR資源中心運作

## 大學社會責任實踐計畫



Plain Area



Urbanized Area



Marina Area



Mountains





# Distinguished International Scholar Co-Teaching Program



The background of the slide is a photograph of the National Central University (NCKU) campus. It features a large, multi-story building with a mix of white and red brickwork, surrounded by lush green trees and a well-maintained lawn. In the foreground, there is a calm pond reflecting the sky and the surrounding greenery. A large, solid red diamond shape is positioned in the lower center of the image, partially overlapping the pond and the building. The text "THANK YOU" is written in a large, white, serif font across the middle of the image, with a thin white horizontal line underneath it.

# THANK YOU

<http://web.ncku.edu.tw/bin/home.php>